

President's Message



Hope Rollins
President, MPHA

My mind is always swirling with exciting ideas and opportunities for the association. There is always so much to do with limited time and resources; however it never stops the urge for progress. I am embarrassed to say, that a full year has passed since IMPACT's last issue. However, the time lost, has been well spent. On April 1st, MPHA contracted with Robert Glandon, PhD as the associations' Executive Director. With over 20 years of public health experience, Dr. Glandon has brought a great wealth of knowledge and enthusiasm to his role. He is currently working on fund development initiatives and building collaborative partnerships across the state, while serving as a spokesperson for MPHA in various venues. As a great mentor, Judy Kloss Smith passed the baton to me on June 30th shortly after our MPHA Board Retreat which took place on the 27th at the trendy Gone Wired Café in Lansing. Sue Waechter of Cornerstone Consulting served as our facilitator for the day as we carefully examined our Mission and Vision statements and created a more progressive Strategic Framework. I am happy to report the new Strategic Framework was recently adopted by Board vote on September 11, 2008, with a greater emphasis on our dedicated members and public health student population in Michigan. Please see Page 13. On August 21st, MPHA was officially notified that our very own peer reviewed journal, Michigan Journal of Public Health (MJPH), under the Editorial leadership of Dr. Greg Cline, will be the recipient of the APHA Committee on Affiliates Commendation award. The recognition is a significant accomplishment in such a short period of time. Through the innovative vision of the Epi Section, the IT Workgroup; and expertise of MPH, MPHA is finally launching its Member's Only Section this month. Each member will have an opportunity to connect and network with their fellow MPHA colleagues based on similar public health specialty, expertise, and interests. The Section will soon include additional resources and tools for members. MPHA implemented a membership wide online satisfaction survey which also incorporated questions related to the associations' website. To date with a response rate of 50%, the MPHA leadership has preliminary insights on member demographics; challenges/barriers pertinent to active participation; ways to enhance member benefits; and progressive ideas of growing the organization. An executive report will be shared in the Winter/Spring issue. The MPHA Executive Committee is busy in consultation sessions this month with Steve Bornstein, an APHA consultant, who aids associations in strategic planning and capacity building. We look forward to providing highlights of our discussions to you all. Lastly, with your involvement, the Board seeks to reactivate the Environmental Health Section and Membership Committee by January 2009.

So, why am I taking time to inform each of you of the achievements we have accomplished thus far? You are important to the sustainability and growth of the association and I want you to spread the word of your valuable membership. We have a great assembly of MPHA Leadership for the 08-09 year, as we seek to secure MPHA's niche in the Michigan public health arena and continue to educate the legislature on public health issues. We aim to increase MPHA's visibility and provide you all with greater leadership opportunities and services, as you continue to serve our wonderful Michigan communities. Catering to our members, identifying our policy priorities, developing a fund development plan, and enhancing governance are our goals this year. It's a mouth full, but can be accomplished with your active involvement.

On the Horizon: I do hope to see you at next year's 2009 Michigan Epidemiology Conference on April 17, 2009, in Ann Arbor and the 2009 Michigan Premier Public Health Conference on October 28-29, 2009 at the Grand Traverse Resort and Spa in Acme, MI. Some final notes, MPHA would like to extend another sincere Thank You to Mark Bertler for his many years of service to Michigan's public health constituency and citizens. A special past member tribute will be made to Keith B. McCall, PhD (MPHA President 1972-1973) in the Winter 2009 issue. Lastly, I do hope those who have family members on the nation's southern shores and Gulf Coast were kept safe out of harm's way during the hurricane season. Thank you for allowing me to serve as your MPHA President and working together to enhance the lives of Michigan families.

Submitted by
Hope Rollins, President
Michigan Public Health Association

Past President's Message

It was an active fall/winter at the Michigan Public Health Association. MPHA successfully collaborated with the other Great Lakes Affiliate/Region V states in receiving a capacity building grant through APHA. The MPHA Executive Committee conducted a search process which led to our contractual relationship with, Dr. Robert Glandon, who serves as our Executive Director. In December the MPHA Board approved a project initiated by the Epidemiology Section to create a "Members Only" section on the MPHA web site. The functionality will allow members to search based on a members' professional specialty and/or public health interest. The Board explored additional uses and enhancements for the "Members Only" area and website as a whole. I was privileged to serve you as President during the 2007-2008 year. I hope you all are as excited as I am with advances MPHA has made this year. 2008 will continue to be a great year for MPHA and public health advocacy in Michigan!

Submitted by Judith Kloss Smith, Past President
Michigan Public Health Association

MPHA Board of Directors

Executive Committee

Executive Director: Robert Glandon, PhD • (517) 337-2730
President: Hope Rollins • (517) 324-8357
Immediate Past President: Judy Kloss Smith • (517) 335-8859
President-Elect: Kathleen Oberst • (517) 432-9824
Secretary: Christi Downing • (517) 335-9056
Treasurer: Mary Scoblic • (517) 335-8915
ARGC: Ingrid Davis • (517) 335-9546

Directors

Alana Aronin
Angela Beck
Julie Gleason-Comstock
Susan Morrel-Samuels
Pamela Nelson
Kathleen Oberst
Carol Parker Lee
Molly Polverento
Rick Renas
Carol Thornton

Michigan Journal of Public Health Editor

Greg Cline, PhD

IMPACT Editor

Hope Rollins

Web Master

Bill Schneider

Section Chairs

Environmental & Occupational Health: Inactive
Epidemiology: Brian Hartl
Health Education: Inactive
Laboratory & Disease Control: Judy Kloss Smith
Nutrition: Inactive
Oral Health: Sheila Vandebush
Podiatric Health: Craig Gastwirth
Public Health Nursing: Jenifer Murray
Reproductive Health: Inactive
Upper Peninsula Section: Inactive
Vision Care: Renee Mika

Committee Chairs

Constitution and Bylaws: Teresa Wehrwein
Finance: Mary Scoblic
Honors/Awards: Mary Scoblic and Anita Turner
Membership: Pending
Nominations/Election: Judy Kloss Smith, Ingrid Davis, Grace Kreulen and Teresa Wehrwein
Program: Hope Rollins, Bill Schneider, Judith Smith and Teresa Wehrwein
Public Policy, Legislation & Resolutions: Mary Scoblic and Ingrid Davis

Archivist: Anita Turner
Liaison from MALPH: Vacant
Liaison to MALPH: Theresa Wehrwein

Membership Benefits

As we constantly immerse ourselves in electronic communication, it's often difficult to feel connected with like-minded professionals and fellow students. So a sincere Thank you to all that completed the online membership survey. We plan to provide the Executive Summary in the next issue. MPHA wants to keep you engaged and active in your association. Yes, it is indeed your association. You are important to the associations' growth, vitality and visibility. MPHA has over 200 members and we project a steady increase as we broaden our reach and create more synergy with our members, statewide organizations, the Great Lakes Affiliate Collaborative, and APHA as a whole in the coming years. To get you re-energized, we wanted to remind you of the great benefits.

- "Members Only Section" on the MPHA website being launched this month
- Award Winning, biannual peer-reviewed Michigan Journal of Public Health
- Biannual IMPACT newsletter
- E-Alerts to MPHA Membership to keep you up-to-date on current public health happenings
- Represent MPHA and actively participate in legislative activities, including National Public Health Week and Day at the Capitol
- Networking and skill building Section, Association Annual Meetings and Conferences
- Unrestricted access to MPHA's website www.mipha.org
- Give back to the community and be a part of the future by your active promotion of health and disease prevention
- APHA's Kellogg Foundation funding - Affiliate value added components include MPHA receiving customized technical assistance in various areas:
 - Advocacy training for affiliate leadership
 - Developing grass roots campaigns
 - Business plan development and templates
 - Succession planning
 - Best practices on non-profit governance
 - Nonprofit operational and financial management
 - Developing and enhancing community/business partnerships, and much more.
- MPHA collaborative partnership with Great Lakes Affiliate/PHA Region V
- Through a signed Memorandum of Understanding with the American Publication Health Association, an affiliate APHA General Liability Insurance policy has been acquired through The Novick Group.
- Advocacy guidance offered at www.apha.org
- Plans are underway to incorporate greater opportunities for students to participate in the 2009 Annual Meeting

We value our members and highly respect your countless hours of dedication and commitment in improving the lives of Michigan's citizens. In the next issue we will share highlights of the 2008 Membership online survey. So spread the word.

Sincerely,

Hope Rollins
President, MPHA

To gain information on the latest public health news visit www.apha.org

Michigan Journal of Public Health

Congratulations Dr. Cline and full MJPH Editorial Board!!!

MJPH has been selected for the APHA Committee on Affiliates Commendation Award based on admirable record of service in the field of public health. Harry Perlstadt will accept the award on behalf of MJPH Editor, Dr. Greg Cline, and the full Editorial Board on October 25th at the APHA Annual Meeting. Support their continuing efforts and commitment and view the latest issue, by visiting www.mipha.org



Call for Abstracts

STYLE:

APA, 12 point font, Times New Roman double spaced, and, 1" margin. We offer a variety of submission categories in order to welcome a varied audience within public health.

SUBMISSION CATEGORIES:

Research and Practice Articles (up to 15 pages or 3500 excluding references, words in main text, a total of 4 standard digital photographs/tables/figures, and a structured abstract of 180 words) report the results of original quantitative or qualitative public health research. These may include, but are not limited to: evaluations/reports, demonstrations of innovative programs, best practice, exemplars/community-engaged scholarship, service learning, emerging problems, evidence-based practice and preliminary findings.

Commentaries (up to 10 pages or 2500 words in main text, 2 tables/figures, and an unstructured abstract of 120 words) include scholarly essays, critical analyses, and policy papers.

Analytic Essays (up to 15 pages or 3500 words excluding references, in main text, a total of 4 standard digital photographs/tables/figures, and an unstructured abstract of 120 words) provide a forum for critical analyses of public health issues from disciplines other than the biomedical sciences, including, but not limited to: the social sciences, human rights, and ethics.

Briefs (up to 4 pages or 500 words excluding references, in main text, 2 tables/figures, and an abstract of up to 80 words) provide preliminary or novel findings.

Editorials (may not exceed 1,200 words) are solicited based on recommendations from the Editorial Board, or members of MPHA. All recommendations require approval from the MJPH Editorial Board.

Letters to MJPH (must not exceed 400 words and contain no more than 10 references) are encouraged by our readers. Letters may include any public health topic.

SUBMISSION FORM:

All authors must sign and submit via surface mail the submission form along with a draft article.

The form is available at:

<http://www.mipha.org/PHJournal/MJPH%20MANUSCRIPT%20SUBMISSION%20FORM.pdf>

MJPH Editorial Board

MEMBERS:

Stephen Borders, PhD, MHA, School of Nonprofit and Public Administration, Grand Valley State University

Greg Cline, PhD, School of Nonprofit and Public Administration, Grand Valley State University

Talat Danish, MD, MPH, Wayne County Department of Public Health

Richard L. Douglass, PhD, Department of Health Administration, College of Health and Human Services, Eastern Michigan University

Kieran Fogarty, PhD, Interdisciplinary Health Sciences PhD Program, College of Health and Human Services, Western Michigan University

Julie Gleason-Comstock, PhD, Center for Urban Studies, Wayne State University

Rebecca A. Malouin, PhD, MPH, Department of Family Practice, Michigan State University

Renée Mika, OD, Michigan College of Optometry, Ferris State University

Kathleen Oberst, PhD, RN, Institute for Health Care Studies, Michigan State University

Harry Perlstadt, PhD, MPH, Department of Sociology, Michigan State University

Dean Smith, PhD, School of Public Health, University of Michigan

Lauren H. Smith, PhD, RN, School of Nursing, Ohio State University

Teresa Wehrwein, PhD, RN, College of Nursing, Michigan State University

OFFICERS:

MJPH Editor: Greg Cline

MJPH Assistant Editors: Talat Danish and Julie Gleason-Comstock

GRADUATE ASSISTANT:

NaTasha Brown, Grand Valley State University

Michigan's Premier Public Health Conference

APHA President Visits 2008 MPHA Annual Meeting

The Michigan Premier Public Health Conference welcomes Linda C. Degutis, DrPH, MSN, President, APHA.

Please join the MPHA Leadership as we welcome Dr. Degutis to the MPHA Annual Meeting on October 15th at the Radisson Hotel at 7:30 p.m., for an informal meet and greet dinner shortly following the evening awards reception. Dr. Degutis will provide the Keynote Address Public Health: Progress and Challenges at 9:00 a.m. on October 16th.

Linda C. Degutis, DrPH, MSN, is Associate Professor of Surgery (Emergency Medicine) and Public Health, and Associate Clinical Professor of Nursing at Yale University. She is Research Director for the Emergency Medicine and Director of the Yale Center for Public Health Preparedness (YCPHP). Dr. Degutis holds a Bachelor of Science degree from DePaul University, and MSN and DrPH from Yale. She was a Robert Wood Johnson Health Policy Fellow, working in the office of Senator Paul Wellstone (D-MN). Dr. Degutis' research and practice interests center on issues related to alcohol and injury and public health preparedness, with a focus on interventions and policy. Dr. Degutis is former Chair of the APHA Executive Board and an active member of the Injury Control and Emergency Health Services Section of APHA, as well as a member of the Connecticut affiliate.

Pictures from the 2007 conference



Fredrick Johansen, M.D., M.P.H., Greg Holzman, MD, MPH, Konrad Edwards, MPH, & Loretta V. Davis, MSA



Ellen J. Clement, MSW, MPH & Adewale Troutman, MD, MPH, MA



Renee Canady, PhD, MPA, Paulette-Dobyns Dunbar, RD, MPH, Dean Sienko, MD, & Brenda Fink, ACSW

SAVE THE DATE



October 28-29, 2009

**Grand Traverse Resort & Spa
Acme, Michigan**

PARTNERS IN PLANNING:

Michigan Association for Local Public Health • Michigan Association of Counties
Michigan Departments of Agriculture, Community Health and Environmental Quality
Michigan Public Health Association • Michigan Public Health Institute • Michigan State University
Great Lakes Chapter Society for Public Health Education • University of Michigan School of Public Health

Laboratory & Disease Control Section

Bureau of Laboratories Centennial Celebration

The Bureau of Laboratories culminated its centennial celebration with a symposium and public forum on April 21, 2008. Attended by over 200 public health and healthcare professionals, students and advocates, the symposium entitled, The Evolution of Public Health Laboratories, examined the past and future roles of public health laboratories.

Michigan Department of Community Health Director Janet Olszewski, welcomed the audience by reviewing the earliest charges to the laboratory and citing the greatest accomplishments of the laboratory over the past century.

Dr. Kenneth Warner, Dean of the University of Michigan School of Public Health discussed the public health laboratory and Michigan's exceptional contribution to the ten great public health achievements of the past century (MMWR 48(50) 1141-7). Not one to rest on the laurels of the past, Dean Warner challenged the audience to consider ways to address the ten great public health challenges of the next century.

Dr. Robert Martin, Acting Director of the National Center for Public Health Informatics, at the Centers of Disease Control and Prevention and former Michigan public health laboratory director, provided an insightful assessment of the challenges of globalization's impact on health. The development of public health laboratory systems will be essential in meeting international health regulations and recognizing and controlling emerging and pandemic infectious diseases.

The keynote address was provided by Ronald M. Davis, MD, President of the American Medical Association and former MDCH Chief Medical Executive. Dr. Davis reviewed the genesis of the split of public health and medical care. He also provided engaging examples of social barriers to health.

Recognizing the future of the laboratory profession, Paul L. Epner, Director of Health Care Improvement Initiatives at Abbott Laboratories, provided an overview of the LabsAreVital™ program. This program is a collaboration of many laboratory professional organizations and individuals with the goals of elevate the status of the laboratory profession, address the laboratory workforce shortage, and explore and interact. Visit labsarevital.com to learn more and enroll as a supporter.

The evolving roles of public health laboratories beyond technology and to leadership and public policy were addressed. Dr. Frances Pouch Downes, current MDCH laboratory director, used historical and contemporary examples to discuss how vision, communication of the vision and action are characteristics of leaders and encouraged the audience to realize their professional, community and personal leadership potential. Mr. Scott Becker, Executive Director of the Association of Public Health Laboratories of Silver Springs, Maryland, presented examples of how public health laboratory professionals have impacted policy through advocacy and evaluation of proposed government legislation and rules using an unbiased position and foundation of technical expertise and quality.

An anthropologist's view of the evolution of human and microbial populations was presented by Dr. George J. Armelagos, Chair of the Department of Anthropology at Emory University in Atlanta, GA. The way people have interacted with their environment has resulted in shifts in human disease patterns. The first shift from sporadic cases of infectious disease to outbreaks occurred when nomadic hunter-gatherers living in small groups started clearing land and maintaining animals in larger groups. The industrial revolution brought greater access to food, the development of sanitation, vaccination and other public health interventions and chronic diseases. We are currently in the third transition where global travel, deforestation, global warming, dense urban populations and political instabilities have resulted in the third epidemiological transition to emerging infectious disease. (The Science, Jan/Feb 1998)

Closing remarks were provided by Ms. Jean Chabut, Deputy Director, MDCH Public Health Administration. Dr. Matthew Boulton, University of Michigan School of Public Health and Dr. Duane Newton, Director, Clinical Microbiology & Virology Laboratories, University of Michigan Health Systems, served as moderators for the symposium.

A public forum, Meeting Future Challenges Facing Public Health: Multiple Perspectives was offered in the evening of the symposium day. A panel of health leaders was assembled to respond to public questions and concerns about the future of health care and prevention. Participants included Bobby Pestronk, Health Officer of the Genesee County Health Department and President of the National Association of County and City Health Officials, Janet Olszewski, Director of the Michigan Department of Community Health, Secretary-Treasurer of the Association of State and Territorial Health Officials, Frances P. Downes, Michigan Public Health Laboratory Director and President of the Association of Public Health Laboratories, Kenneth Warner, Dean of the University of Michigan School of Public Health, William D. Strampel, Dean of the Michigan State University College of Osteopathic Medicine and Ronald M. Davis, Director of the Center for Health Promotion and Disease Prevention, Henry Ford Health Systems and President of the American Medical Association. The session was moderated by Gretchen Millich, a radio journalist with WKAR Public Radio, East Lansing. The stimulating and provocative discussion provided ample agreement that radical changes to the health care system in the United States are needed.

The symposium and public forum were planned by Bureau employees.

The planning committee wishes to extend thanks to the speakers, attendees and sponsors.

Reprinted from MDCH, Bureau of Laboratories Newsletter, by Frances Pouch Downes, DrPH, Director of the Bureau of Laboratories at the Michigan Department of Community Health.

Coalitions in Action: The Detroit Food and Fitness Collaborative

National Context:

The W.K. Kellogg Foundation Food & Fitness Initiative works to create vibrant communities that support access to locally grown, healthy, affordable food, and safe and convenient places for physical activity and play—for everyone. Detroit, MI is one of nine diverse communities chosen to embark on an endeavor that addresses social and environmental conditions affecting children and families. Each community received a two-year planning grant with the potential for longer-term implementation support.

Vision:

“In 10 years, Detroiters will live in a vibrant city that supports families, children and the entire community by promoting and celebrating a way of life that is characterized by healthy food, physical activity and healthy play.”

Mission:

Most other wellness initiatives target individual behavior or particular components of the physical environment (parks, recreation centers). The Detroit Food and Fitness Collaborative (DFFC) seeks to impact local systems (e.g. transportation), policy (formal and informal procedures and decisions), and culture (customs and practices) to achieve its vision.

Selected Accomplishments:

Since August 2007, with City Connect Detroit and the Detroit Department of Health and Wellness Promotion as co-conveners, the DFFC has:

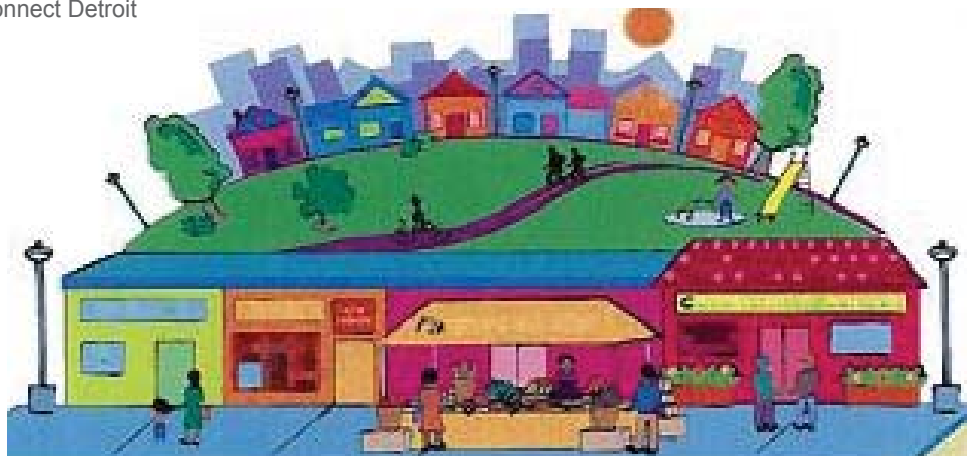
- developed a policy, systems and cultural change analytical framework to guide the work.
- researched and wrote Detroit food system and built environment/physical activity overviews; and documented related policy and program-focused organizations and initiatives.
- hosted a two-day WKKF Technical Assistance and Planning Team Learning Orientation visit featuring tours of Eastern Market and other Detroit gems.
- coordinated a local grocery store tour to improve Collaborative member’s understanding of food provider business dynamics.
- conduct Teach-Ins for Collaborative members and supporters.
- through its work groups, begun to identify initial policy areas of focus.
- established a comprehensive, process and content-focused evaluation process.

Desired Outcomes:

At the end of the planning process the DFFC will: (1) develop a comprehensive, authentic, policy and systems change-focused Community Action Plan that complements and supports local community education, as well as specific behavioral and environmental change initiatives; (2) submit the Community Action Plan and a proposal for implementation funding to the W.K. Kellogg Foundation; and (3) share the Collaborative’s planning process and outcomes evaluation results.

Other project sites are located in Boston and Holyoke, MA; New York City; Northwest Iowa; Oakland, CA; Philadelphia, PA; Seattle/King County, WA; and a Native American nation, the Tohono O’odham, in Sells, AZ.

Submitted by: City Connect Detroit



Michigan Childhood Obesity

As a result of overweight and obesity, children are in danger of serious long-term conditions. Overweight children are more likely to have high cholesterol and high blood pressure – risk factors for heart disease. They are also more likely to develop Type 2 diabetes, which previously had only been seen in overweight adults. All children are at risk, but minority children are at greatest risk. African American and Hispanic children are most likely to be overweight.

Based on 2005 Youth Risk Behavior Survey results, Michigan falls in the middle of childhood obesity rates (10-14% range) along with 28 other states. Four states have rates of less than 10% and seven states have rates higher than 14%. (Source: <http://www.cdc.gov/HealthyYouth/overweight/overweight-youth-txt.htm>)

Obesity is complex – although genetics can predispose some individuals to overweight and obesity, a myriad of environment and behavioral factors also play a critical role. Research supports the following risk factors that lead to weight gain, particularly in children include:

- More meals consumed away from home
- Increased sugar-sweetened beverage consumption
- Larger portion sizes
- Too few fruits and vegetables
- Less time spent in physical education at school
- Insufficient physical activity
- Increase screen time (watching television and videos, playing video and computer games)

Michigan is focusing on prevention because treatment of obesity in children has been largely unsuccessful. We are also focusing on population-based efforts that affect children's environments (policy and environmental changes) in multiple settings-schools, health care, communities, child care, preschools, etc.

Policies are laws, regulations, and rules (both formal and informal) that support healthy lifestyles. Examples of health policies include: laws and regulations that restrict smoking in public buildings; organizational rules that provide time off during work hours for physical activity; policies that prohibit the sale of soda at school during the meal hour.

Environmental interventions are changes to the economic, social, or physical environments. Examples of healthy environments include: incorporating walking paths and recreation areas into new community development designs; making low-fat choices available in cafeterias; removing ashtrays from meeting rooms.

Successes to date:

In Schools:

- 90 % of Michigan schools and more than 200 Private and charter schools use the Michigan Model
- Increasing number of schools using Exemplary Physical Education Curriculum (EPEC)
- Over 100 schools now have healthier vending, such as milk, fruits, vegetables.
- Over 25 schools have offered daily free fruits and vegetables to their students.
- More schools serving breakfast to students who don't have access to breakfast at home.
- Schools are eliminating deep frying and offering healthier lunch options.
- Schools eliminating high calorie beverages from vending machine.
- School health centers are reporting that children are losing weight and becoming more physically active. This has also reduced absenteeism and reported illnesses.

In Communities:

In 2005, 7 local health departments serving 17 Michigan counties were awarded funding from the MDCH to complete a 3-year strategic action agenda focusing on evidence-based policy and environmental change strategies to increase access to healthy food, physical activity and smoke-free environments. In 2005-2006, seven local health departments worked with more than 30 community coalitions and their initiatives reached more than 142,000 residents.

- 14,000 walking maps distributed
- 129 fitness classes provided
- 2,129 healthy food taste testing provided
- 100 nutrition education classes provided
- 800 nutrition education posters placed in low-income areas
- 590 day care centers receiving healthy eating and activity booklets
- 5,000 Senior Project FRESH coupon books distributed
- 11 new or enhanced trails
- 50 Miles of new trails
- 59 Miles of enhanced trails
- 5 new farmers market locations
- 6 new healthy food places
- 7 new community gardens
- 7 enhanced parks

Public Health Nursing Section

PHN Section Annual Meeting was a great success!

Over 70 Public Health Nurses, nursing students and other interested persons attended the PHN Section Annual Meeting on Tuesday, April 22nd, held at the Ingham County Health Department. The program topic was "Ethics in Public Health Nursing". Peter Jacobson, JD, MPH, a professor at the University of Michigan, School of Public Health started the morning by presenting his findings from recent interviews of local health department staff who shared their personal experiences with ethical issues in public health practice. The morning followed with Mary Lagerwey MSN, PhD, a nursing professor from Western Michigan University, sharing a framework for ethical decision making for Public Health Nurses. Networking and an overview of PHN Section Business occurred over the lunch hour and Jeannette Klemczak, Michigan's Chief Nurse Executive, closed the meeting by sharing her progress with Michigan's Nursing Agenda. It was a thought provoking day and all who attended enjoyed the time together. Thank you to the PHN Section Board for your hard work in planning the Annual Meeting.

Photo Gallery



Photos provided by Roberta Asplundh

Keep Your Family Safe from the Flu

- Get the flu vaccine for yourself.
- Get the flu vaccine for your child.
- Get the flu vaccine for those around you.

Who should get the flu vaccine every year?

Persons at increased risk for influenza:

- children 6 months through 4 years of age
- persons 65 years and older
- pregnant women
- people living in nursing homes
- people living in long-term care facilities, like group homes
- children 6 months to 18 years old who take aspirin every day
- persons 6 months old and older with ongoing health problems, such as:
 - asthma or other lung diseases
 - diabetes
 - kidney diseases
 - heart disease
 - HIV/AIDS
 - sickle cell anemia
 - immune system problems
 - nerve and muscle problems that make it hard to breathe, like spinal cord injuries or seizure disorders

For More Information, visit,
www.cdc.gov/flu
www.michigan.gov/flu
www.michigan.gov/immunize
www.vaccineinfo.org



Vision Care Section

Legislative updates: Protecting children's right to sight

Every child has the fundamental right to health care. Vision care is no exception, yet less than 14% of children have had an eye exam prior to entering school and one in four school-age children have a vision problem. Read below to learn more about relevant legislative updates and programs addressing children's vision care initiatives, such as InfantSEE®.

Vision Care for Kids Act (HR 507 / S. 1117)

This pivotal piece of legislation, introduced last January (2007), was developed by leading authorities within the vision community including Prevent Blindness America, the American Academy of Ophthalmology, the American Optometric Association (AOA) and the Vision Council of America. If passed, (HR 507 / S. 1117) will provide states access to federal grants to: 1) provide comprehensive eye examinations by a licensed optometrist or ophthalmologist for children identified by a licensed health care provider or vision screener, with priority to children under age nine; (2) provide treatment or services to correct vision problems of such children; and (3) develop and disseminate educational materials on recognizing signs of visual impairment in children. HR 507 was approved by the U.S. House (10/15/07) and is pending before the Senate Committee on Health, Education, Labor and Pensions. Key Sponsors: Sens. Kit Bond (R-MO) and Chris Dodd (D-CT); Reps. Gene Green (D-TX), Bill Pascrell (D-NJ), Ileana Ros-Lehtinen (R-FL).

Federal Funding for InfantSEE®

The MPHA Vision Care Section provided a lengthy summary of the InfantSEE® program in the Winter 2007 issue of IMPACT (<http://www.mipha.org/impact.htm>). InfantSEE® is a NO-COST nationwide public health campaign serving to integrate comprehensive vision and eye care in the series of well-baby health checks between a child's first 6 months to one year of life. InfantSEE®, developed by the AOA in partnership with The Vision Care Institute of Johnson & Johnson Care, Inc., recently received Congress approval for a \$438,000 direct appropriation for this initiative as part of the Consolidated Appropriations Bill for FY 2008, approved Dec. 19, 2007. Key Sponsor: Sen. Robert Byrd (D-WV).

American College of Nurse-Midwives (ACNM) endorse InfantSEE®

The American College of Nurse-Midwives (ACNM), the oldest women's health care organization in the US announced its endorsement of InfantSEE®. "The mission of ACNM is to promote the health and well-being of women and infants within their families and communities", said Lisa Summers, CNM, DrPH, Director of Professional Services for ACNM. "As primary care providers with a focus on health promotion, disease prevention, and health education, midwives can be particularly effective supporters of the InfantSEE® program. The program provides families with a complement to the well-baby care each child deserves," added Dr. Summers.

Calling ALL Public Health Professionals...

The MPHA Vision Care Section asks all public health professionals within the state of Michigan to learn more about this important program and encourage health professionals and the public to work together to protect children's right to sight. Since program initiation in 2005, over 7,300 doctors of optometry are members nationwide and over 300 InfantSEE® providers reside in Michigan (see Dr. Locator: <http://www.aoa.org/x5428.xml?filter=IS>). For more information, call (888) 396-EYES (3937) or visit www.infantsee.org.

Submitted by: Renée Mika, OD, Chair, Vision Care Section



<http://www.customsiliconebracelets.com/infantsee.php>

GovTrack.us. S. 1117--110th Congress (2007): Vision Care for Kids Act of 2007, GovTrack.us (database of federal legislation) <<http://www.govtrack.us/congress/bill.xpd?bill=s110-1117&tab=summary>> (last accessed Jan 22, 2008)

AOA press release dated May 2, 2006 (<http://www.infantsee.com/documents/InfantSEE-ACNM-Release.pdf>).

All photos courtesy of www.infantsee.com.



Epidemiology Section

Michigan Epidemiology Conference

For the first time in its seven-year history, the Michigan Epidemiology Conference was held on the campus of Michigan State University on April 4, 2008. The conference was co-sponsored by the MSU Department of Epidemiology and also received support from the following organizations:

- Altarum Institute
- Michigan Public Health Institute
- Sanofi-Pasteur
- Michigan Association of Public Health and Preventive Medicine Physicians
- Wyeth
- Michigan Society for Infection Control
- University of Michigan Department of Epidemiology

The all-day event attracted 203 attendees to the MSU Union. Elizabeth Crane, Ph.D, MPH from the U.S. Department of Health and Human Services Substance Abuse and Mental Health Services Administration presented the keynote address on the epidemiology of drug use, misuse, and abuse. Additional morning speakers included James Rudrick, Ph.D from the Michigan Department of Community Health (MDCH) Bureau of Laboratories who discussed the latest information on Vancomycin Resistant Staphylococcus aureus (VRSA) and Nigel Paneth, MD, MPH from the MSU Department of Epidemiology who provided an update on the National Children's Study in Michigan.

In addition to the morning speakers, conference attendees participated in two poster sessions where they were able to peruse over 30 posters and interact with the authors. The afternoon session consisted of 12 presentations given by representatives from MDCH, the Michigan Public Health Institute, the Michigan Department of Education, and local public health departments, as well as students from local schools of epidemiology. Presentation topics in the afternoon ranged from a recap of a tuberculosis outbreak in Flint to birth outcomes among Arab-Americans in Michigan before and after the terrorist attacks of September 11, 2001. Additionally, four professionals representing various facets of epidemiology (international, academia, local and state government) answered questions from future public health leaders as part of the career roundtable session.

The Epidemiology Section would like to thank all of the conference attendees and sponsors for making this one of the most successful Epidemiology Conferences to date. More information on the conference, including poster abstracts, presentations, and photos can be found on the Epidemiology Section's web page at <http://www.mipha.org/epi/Conf2008/ConfAgenda2008.html>.



*Conference attendees listen to the morning sessions.
Close to 200 people attended.*

Save the Date

2009 Michigan Epidemiology Conference

April 17, 2009

Towsley Center,
University of Michigan



*Nigel Paneth
discusses Michigan's involvement in the
National Children's Study.*



*The conference was co-organized by the
MSU Dept. of Epidemiology;
Jayne Goeddeke and Jim Anthony
provided a great deal of support.*

Affiliate Representative to the Governing Council (ARGC)

Report from the Desk of the ARGC

Each year the American Public Health Association (APHA) receives a number of new proposals to adopt as policy. The following is a list of twenty new policies adopted by the APHA Governing Council during its 135 Annual meeting in November 2007. The policies address issues such as global climate change, trans fat and toxic substances. To read the full text of each policy go to www.apha.org/advocacy/policy.

As MPHA's Affiliate Representative to APHA's Governing Council (ARGC) my role is to provide input and vote on all APHA policies.

- Smoking cessation to prevent vision loss
- Addressing obesity through nutrition, agriculture policy
- Reducing obesity disparities through environmental justice
- Douching and adverse health outcomes
- Agent orange
- Tobacco-free schools
- Toxic substances
- Global climate change and public health
- Public health infrastructure and physical activity
- Improving coding in hospital discharge data
- Restricting trans fat
- Healthy, sustainable food system
- Eye care in disaster preparedness
- Breastfeeding as a fundamental public health issue
- School information sharing for public health
- Securing Medicare
- Preventing and controlling multi-drug resistance organisms
- Opposing U.S. attach on Iran
- Late Breakers
- Lead ban in paint, children's products, consumer products
- Safe legal abortion services

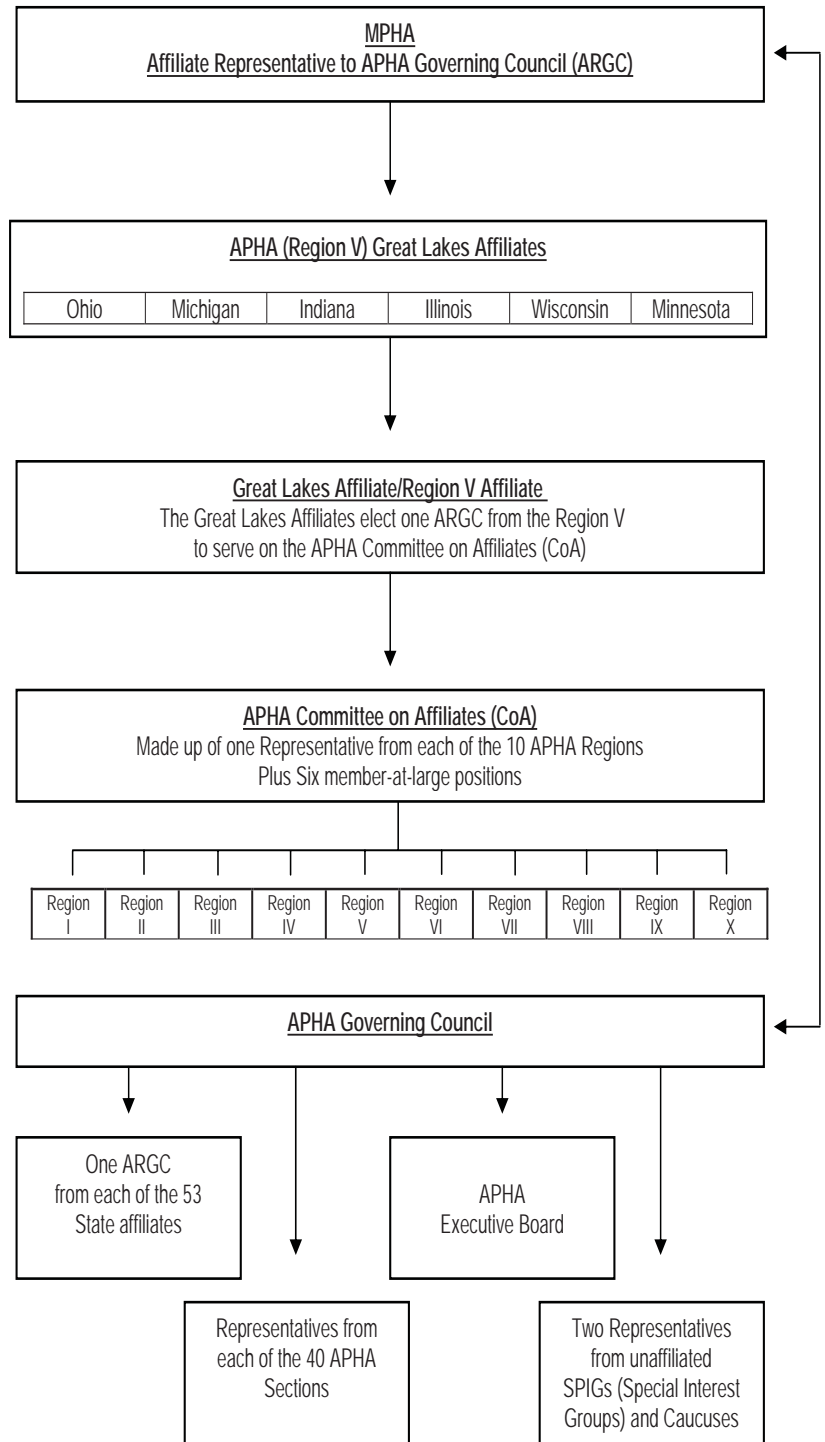
Respectfully,

Ingrid Davis, M.P.A.

MPHA's Affiliate Representative to Governing Council (ARGC) of APHA



*Ingrid Davis, MPA
MPHA, ARGC*



Legislative Updates

HPV Information Bills Move to House Floor

House Bills 5171 and 5322 would require that MDCH develop educational materials on the HPV vaccine(s), (HB 5171), and that schools distribute the information to the parents of girls entering the 6th grade, (HB5322). H.B. 5322 passed House 2/12/08, passed Senate 4/24/08, signed by governor on 5/8/08 as Public Act 121). H.B. 5171 has been referred to Committee on Health Policy, Second Reading of the House.

Pay Attention to Term Limits

Please note that 44 of the 110 seats in the State House of Representatives will be term limited in the 2008 election. Therefore, it is important that you know whether your State Representative is term limited and that you also become aware of who is running to take their place. While the primaries aren't until August, candidates are already testing the waters so it is important that public health issues are discussed early and often.

In addition, the earlier in the process that a candidate identifies you as a source of information and demonstrate expertise, the greater the likelihood that you will become a trusted source for that candidate and be looked to for advice and counsel.

Support Smokefree Workplace Legislation

Public health advocates should be focusing their attention on the State Senate to encourage them to pass statewide smokefree workplace legislation, (HB 4163). This bill has passed the State House and is currently awaiting action in the Senate Government Operations Committee.

Members of the Committee include Senators, Bishop, Patterson, Cassis, Kuipers, Schauer, Clarke and Olshove. You can find advocacy messages to send to these senators on the Michigan portion of the American Cancer Society website at www.cancer.org or the MALPH Government Relations site at www.capwiz.com/malphp.

It is important that the Senate act on HB 4163 sooner rather than later, as 2008 is the second and last year of the current legislative session. Legislation that doesn't pass by December of 2008 expires and must be reintroduced in the following session which begins in January, 2009

Legislative Updates Submitted by: Mark Bertler
Updates were submitted prior to Bertler's departure as Liaison from the Michigan Association of Local Public Health in May 2008

Member Highlights and Tributes

Michigan Public Health Association Life Time Membership Award

Dr. Maurice S. Reizen, MD, MSPH

A Detroit native, 88 year old, Dr. Maurice S. Reizen, MD MSPH has worked diligently to improve the health of Michigan residents. Dr. Reizen received his medical degree from the University of Rochester (1950) after being discharged from the U.S. Air Force as a Captain in 1945. He also attended the University of Michigan where he received his Bachelors of Arts (1940) and his M.S.P.H. in 1946. Throughout his career he has been a leader in maintaining and improving Michigan's health. Serving as Medical Deputy in Health Promotion and Disease Prevention Administration for the Michigan Department of Public Health (1982-84), the Director of the Michigan Department of Public Health (1970-81), and Ingham County Health Department (1966-70) speak volumes for his genuine concern for Michigan's health. He has been appointed to the Sparrow Health System Board of Directors (Emeritus, 1999), Statewide Health Coordinating Council (1976-80), and Governors Task Force on Medicaid and Health Care costs (1977-79). Dr. Reizen holds lifetime memberships in the American Medical Society, Ingham County Medical Society and now Michigan Public Health Association. In addition to this, he has been listed in WHO'S WHO IN AMERICA. He has also received recognition from Governor John Engler for Outstanding Service (1991), the Michigan Council for Maternal and Child Health for Outstanding Achievement (1993), and the Distinguished Service Award from the Michigan Public Health Association in May of 2002.



He has been an advocate for Michigan's health and it reflects in his accomplishments and leadership positions. In addition to public health, he enjoys fishing and spending time with his family. Dr. Maurice S. Reizen currently resides in Okemos with his wife Leonor and works as a Public Health Consultant.

Thank you for your commitment to public health.

Please look for a candid interview with Dr. Reizen in the 2009 Winter issue.

Michigan Public Health Association Strategic Framework

On June 27, 2008, the MPHA Leadership conducted a day long strategic planning retreat. We are proud to report the final revised Strategic Framework to the membership. We want to convey a strong message to our members that we want YOU to be a part of what we do as a statewide association. Creating leadership and advocacy training and opportunities for members are essential to building MPHA's visibility and membership. We have placed you first in our continued efforts as you work hard each day to create a healthier Michigan.

Organizational Priorities for the Michigan Public Health Association*

Mission Statement: <i>To enhance the ability of the association and its members to advocate for, promote and protect community health and the environment.</i>	
Vision Statement: <i>MPHA is a growing and effective resource, empowering our members and engaging our partners and decision-makers to achieve a healthier Michigan.</i>	
Priority A	Priority B
ENHANCE MEMBERSHIP AND ORGANIZATIONAL CAPACITY	DEVELOP AND MAINTAIN STRATEGIC RELATIONSHIPS
<i>Strategies</i>	<i>Strategies</i>
1. Increase and diversify individual and associate membership.	1. Strengthen collaboration and liaison with current partners.
2. Review and revise governance to achieve strategies.	2. Expand the diversity within our partnerships to reflect the communities we serve.
3. Create a plan to develop organizational capacity including leadership and fund development.	
Priority C	Priority D
STRENGTHEN PUBLIC HEALTH POLICY AND ADVOCACY	IMPROVE PUBLIC HEALTH PRACTICE AND SCIENCE
<i>Strategies</i>	<i>Strategies</i>
1. Develop Public Health policy priorities to serve as a base for advocacy.	1. Collaborate with partner organizations, agencies, universities, and other stakeholders to promote public health, evidence-based practice.

Please Note *The above identified strategies received the highest weighted voting at the June 27, 2008 Retreat. There are additional strategies that are outlined on MPHA Action Plans for each prioritized strategy which encompass previously listed strategies.*

*Adapted from the Illinois Public Health Association Strategic Framework 2004-2009

Adopted by the MPHA Board of Directors on September 11, 2008

Upcoming Events



Building the Practice of Public Health

	<p>OFFICE OF PUBLIC HEALTH PRACTICE</p>	<p>Applied Research Education Lifelong Learning</p>
---	--	---

BUDGETING AND COST ACCOUNTING



Using budgeting as planning and managements tools for organizations in public health and human services fields

2 Days: Fri, Nov 14 & Fri, Nov 21
Taylor, MI

Course Description

Considering the organization as a firm that must be managed within a set of financial constraints, participants will develop an understanding of those constraints, in terms of costs and revenues. Participants will learn how to use various measures of cost in making, planning, and operating decisions for their organizations. As part of the course work, participants will apply concepts in the course to situations faced by their organizations. (No background in or workplace duties involving accounting required.)

Cost is \$135 and includes all materials.

Scholarships for Michigan's public health practitioners are available!*

*Community-based organizations may be eligible for multiple scholarships per organization.

The first part of the course will be offered November 14 and the second part on November 21, 9:00am-3:00pm each day. The course will be held in Taylor, Michigan at the SEMCA office, 25363 Eureka Road, Taylor, MI.

10 nursing contact hours, CHES or social work credits provided

The Michigan Public Health Training Center courses have been made possible through funding from the Health Resources and Services Administration (HRSA), Bureau of Health Professions.

Instructor

Jack Wheeler, Ph.D., is Professor of Health Management and Policy, University of Michigan School of Public Health, where he served as chair from 1991-1997. During his term as chair, the department was recognized as the leading program in health administration education in the country.



Target Audience

Practitioners in local and state health departments, community-based organizations and health care delivery organizations.

To register: go to
www.mittrainingcenter.org
or call 734-615-9439



9/17/2008

Upcoming Events

Michigan Primary Care Association Annual Conference

October 19-21, 2008
Acme, MI
www.mpca.net

5th National Conference on Health Issues in the Arab American Community

November 6-7, 2008
Dearborn, MI
www.arabamericanhealthconf.org

Michigan Rural Health Conference

April 23-24, 2009
Mt Pleasant, MI
www.mcrh.msu.edu

Addressing Racial & Ethnic Health Disparities through Public Policy: Exploring Effective Strategies

October 21-22, 2008
Detroit, MI
www.regonline.com/HDRMH08

20th Annual National Forum on Quality Improvement in Healthcare

December 8-11, 2008
Nashville, TN
www.ihl.org

Social Marketing in Public Health

June 17-20, 2009
Tampa, FL
www.cme.hsc.usf.edu/smph/

136th APHA Annual Meeting and Expo

October 25-29, 2008
San Diego, CA
www.apha.org

19th Annual Art & Science of Health Promotion Conference

March 16-19, 2009
San Francisco, CA
www.healthpromotionconference.org

MDCH public health trainings and conferences can be found at:

mdch.train.org/calendar_calendar_links.html

MPHI public health trainings and conferences can be found at:

www.eandt.mphi.org

14th Annual STD&HIV Conference

November 6-7, 2008
Ann Arbor, MI
www.mihivnews.com

National Oral Health Conference

April 20-22, 2009
Portland, OR
www.nationaloralhealthconference.com

SAVE THE DATE

March 19 -20, 2009

Kellogg Hotel and Conference Center
East Lansing, Michigan



Michigan's
Public Health Technology Conference

Promoting Public Health Performance with Technology

A conference to educate health professionals on

- *the value of technology in the public health field*
- *the use of new technologies to solve complex problems*
- *the ability to improve work performance with technology*

Join us as we **share**, **examine** and **explore** existing and emerging technologies, emphasizing practical solutions to real issues

Mark your calendars and watch the MALPH website www.malph.org on the Events page for conference updates and registration information (December 2008).

For more information contact Julie Zdybel at 517-485-0660 or jzdybel@malph.org.

If you would like to add your upcoming public health event to the next issue of IMPACT, please contact Hope Rollins at rollins_hopem@yahoo.com.

MICHIGAN PUBLIC HEALTH ASSOCIATION
PO Box 15306
Lansing, MI 48901-5306



IMPACT
newsletter

In This Issue...

President's Message.....	Page 1
MPHA Updates.....	Page 2
MJPH.....	Page 3
MPPHC.....	Page 4
Laboratory.....	Page 5
Coalitions in Action.....	Page 6-7
Nursing.....	Page 8
Vision.....	Page 9
Epidemiology.....	Page 10
ARGC.....	Page 11
Legislative Updates.....	Page 12
Highlights & Tributes.....	Page 12
MPHA.....	Page 13
Upcoming Events.....	Page 14-15



Save the Date

**Michigan's Premier
Public Health Conference**
*Advancing Public Health:
Preventing, Promoting and Protecting*

October 28 & 29, 2009

Grand Traverse Resort
Acme, Michigan

More information
can be found on page 4

IMPACT Committee
Hope Rollins - Editor
Cheryl Lauber, DPA, MSN, RN
Tarah Collins - Graphic Design